

Teichdrama

Philip Douvier, 2019

Violine I



Teichdrama

Philip Dowie, 2019

Adagio ♩ = 80

Violine I

Measures 1-5 of the Violine I part. The music begins with a piano (*p*) dynamic and *sotto voce* marking. It features a series of quarter notes with rests, starting on G4 and moving stepwise up to D5. A hairpin crescendo is shown above the staff, and a *V* (vibrato) marking is placed above the first measure.

Measures 6-11. The music continues with quarter notes and rests, moving from D5 down to G4. A hairpin crescendo is shown above the staff.

Measures 12-17. The music continues with quarter notes and rests, moving from G4 up to D5. A hairpin crescendo is shown above the staff, and a *f* (forte) dynamic marking is placed below the staff. A *V* marking is placed above the final measure.

Measures 18-22. This section is marked with a box containing the letter 'A'. The music consists of eighth notes with beams, moving from D5 down to G4. A hairpin crescendo is shown above the staff.

Measures 23-27. The music continues with eighth notes and beams, moving from G4 up to D5. A hairpin crescendo is shown above the staff.

Measures 28-32. The music consists of eighth notes with beams, moving from D5 down to G4. A hairpin crescendo is shown above the staff.

Measures 33-41. This section is marked with a box containing the letter 'B'. It begins with a four-measure rest, indicated by a '4' above the staff. The music then resumes with quarter notes and rests, moving from G4 up to D5. A hairpin crescendo is shown above the staff, and a *p sotto voce* dynamic marking is placed below the staff. A *V* marking is placed above the first measure after the rest.

Measures 42-47. The music continues with quarter notes and rests, moving from D5 down to G4. A hairpin crescendo is shown above the staff.

Measures 48-52. This section is marked with a box containing the letter 'C'. The music consists of eighth notes with beams, moving from D5 down to G4. A hairpin crescendo is shown above the staff, and a *f* (forte) dynamic marking is placed below the staff.

Measures 53-57. The music continues with eighth notes and beams, moving from G4 up to D5. A hairpin crescendo is shown above the staff, reaching a *ff* (fortissimo) dynamic. The music then transitions to a piano (*p*) dynamic with a hairpin decrescendo below the staff.

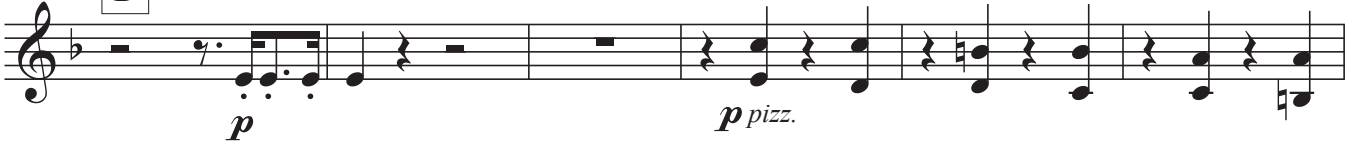
Teichdrama - Violine I S. 3

58



63

D



69

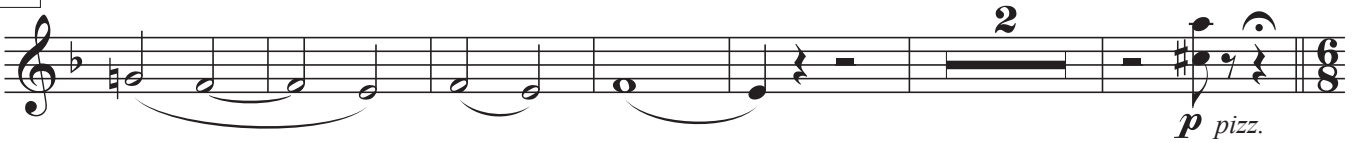
E



75



80

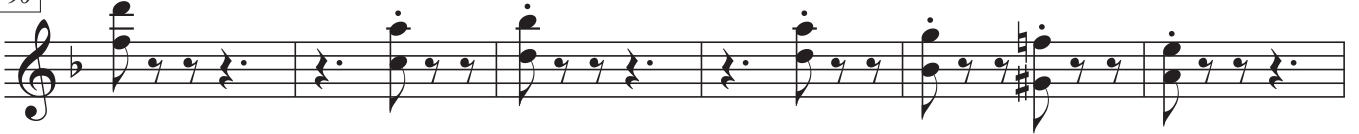


88

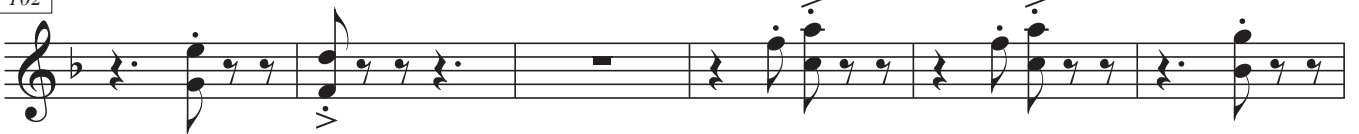
Allegro (♩. = c. 60)



96



102



108



114

F

G



Teichdrama - Violine I S. 4

127

p arco sf p

135

sf p

143

H

sf p

150

sf p

157

3

mf

166

sf sf sf

173

I

f

178

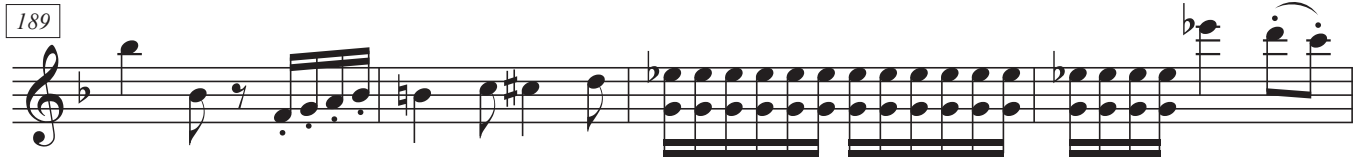
f

184

f

Teichdrama - Violine I S. 5

189



193



198



202



212



Teichdrama - Violine I S. 6

220 **J**

p arco

224

228

232

mf

235

p

239

243

f **K** *ff*

247

251

f

254

L *sfz* *p con sord.*

258

Teichdrama - Violine I S. 7

263

dim. poco a poco

267

ppp

272

Largo (♩ = 60)

p dolce cantabile *sehr breit gestrichen*

278

dim. poco a poco

284

p *pp*

292

M Andante (♩ = 90) Swing-Achtel

pp *p senza sord.*

299

305

311

f

317

p