

Brasileira

aus der "Scaramouche"-Suite
Darius Milhaud (1892-1974)
Arr. Philip Dowie

Violine II



Brasileira

aus der "Scaramouche"-Suite
Darius Milhaud (1892-1974)
Arr. Philip Dowie

Mouv. de Samba (♩ = 80)

Violine II

f *sim.*

5

10

15

A *ff*

21

B *p*

29

cresc.

37

C *f* *sfz* *mf*

44

mf

51

D *mp pizz.*

58



64



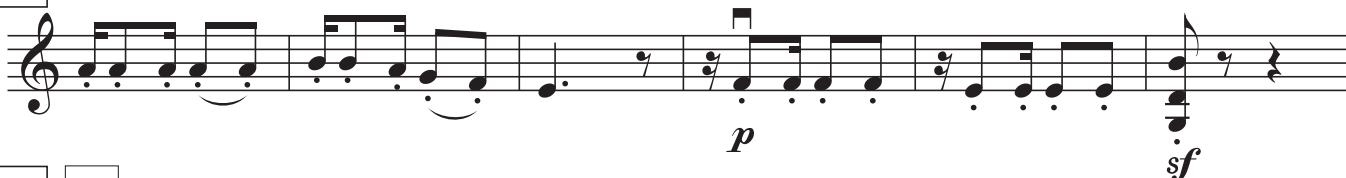
71



79



87



93

F



100



105

G



111

